



**CITY SURFACE  
REPAIRS**

Restoration Services





## **SURFACE REPAIR, RESTORATION & REFINISHING SPECIALISTS**


- ALL SURFACE REPAIRS
- SPRAY PAINTING & COATINGS
- FRENCH POLISHING & TIMBER RESTORATION
- STONE REPAIRS, CLEANING & POLISHING
- GLASS REPAIRS & POLISHING
- FLOOR SANDING & REFINISHING



*Repair,  
Restore,  
Refinish*

 [info@citysurfacerepairs.com](mailto:info@citysurfacerepairs.com)

 07500617257

 [www.citysurfacerepairs.com](http://www.citysurfacerepairs.com)

 07960072539

## ABOUT US

We help clients **save time, money, and reduce waste** by focusing on repair rather than replacement. Our commitment to excellence ensures the highest quality, cost-effective repair and refinishing services nationwide



We repair all forms of damage including but not limited to dents, scratches, chips, burns, defects, holes and snags on-site. We pride ourselves on having a highly skilled team trained in all aspects of damage repair and resurfacing. We use the latest products and the best equipment enabling us to deliver a quality service to budget and within deadlines.

Our repair solutions can also reduce your environmental impact, as well as lowering your cost and reducing timescales.

Our customers include some of the largest construction companies in the UK and smaller subcontractors specialising in building fit-out and refurbishment.

Our fully qualified and experienced team of operatives work across new build developments, high end residential, heritage projects, Cat A&B fit outs, Hotels and Commercial refurbishments nationwide.

*Repair,  
Restore,  
Refinish*

# HEALTH & SAFETY

## The safety of our operatives, clients and the public is paramount to City Surface Repairs.

Every aspect of our work is heavily safety orientated and all our operatives are trained to the highest HSE compliance available.

From the moment a technician is employed they are educated and trained in the safest methods of work, how to assess risks, and what PPE should be worn.

### City Surface Repairs annual employee training includes:

- Falls/working at height
- Asbestos awareness
- Fire Safety
- First Aid
- Power tools and many more

Our operatives all hold valid **IPAF & PASMA** licenses, all managers and site managers hold either a **SSSTS or a SMSTS** certificate.

We ensure all technicians are fully aware of any risks or hazards in their work schedules, which are bespoke to each client and site we visit.

Our management team and internal Health & Safety officers ensure operatives are provided with the most up to date advice, guidelines, safety announcements and bulletins.

City surface repairs ensure that all technicians are provided with the correct

All members of staff have mandatory health and safety training at our sister company **City Surface Training** centre in Upminster continuously throughout the year.



PPE they require, which is monitored by an appointed external Health and Safety company. Our health and safety company provide professional and up to the minute safety advice, face-fit mask tests and provide training when required to ensure we are compliant with HSE.

All City surface operatives hold a valid CSCS site cards and **NVQ** accreditations in **Surface Damage Repairs**.

In addition to the operatives safety, our fleet of vehicles are checked regularly for their safety. All equipment is **PAT tested** inline with the HSE guidelines.

# ALL SURFACE REPAIRS



## Resurfacing for All Projects

Our resurfacing service includes the repair and resurfacing to damage of varying degrees on new developments and refurbishments, such as:

- Curtain walling
- Cladding
- Mullions
- Doors
- Door Frames
- Window Frames
- Vanity Units
- Rainwater Goods

## Comprehensive Repair & Restoration Expertise

Whether it is damage to new builds or degraded surfaces to a building refurbishment, we have the technical skills, knowledge, project management and expertise to repair and restore any damaged item including:

- Aluminium
- Steel
- UPVC
- Plastics
- Wood
- Laminate
- Powder Coated
- Anodised
- Scratches
- Scuffs
- Dents
- Chips
- Cracks
- Stains
- Worn
- Burns
- Rust
- Screw holes
- Discolouration
- Rebranding



# SPRAY PAINTING & COATINGS

**Using cutting edge state of the art HVLP and Airless spray systems, City surface repairs can spray apply coatings on all surfaces achieving the highest quality finishes.**

Whether in situ or in our South London workshop with a fully kitted out spray booth, our team provide all spray applied colours and finishes available.

We also provide paint stripping services allowing a fully bespoke refinishing service, some of the surfaces we spray finish include:

- All wood and bespoke joinery
- Panelling
- Kitchens
- Doors
- Frames
- Walls
- Ceilings
- Shutters
- Staircases
- Desks
- All metals
- Upvc doors and frames
- Plastics



# WOOD REPAIRS & FRENCH POLISHING

**Our versatile team consists of both modern and traditional French polishers with a wealth of experience working across new bespoke joinery and heritage sites including listed buildings nationwide.**

We like to apply both modern and traditional French polishing methods and techniques ensuring the highest quality wood repair and refinishing service available in the UK.

From damage repair, staining, lacquering, varnishing, graining and traditional french polishing our team ensure a tailored approach to each project ensuring the highest quality outcome.

City surface repairs can provide bespoke timber repair, refinishing and restoration services including:

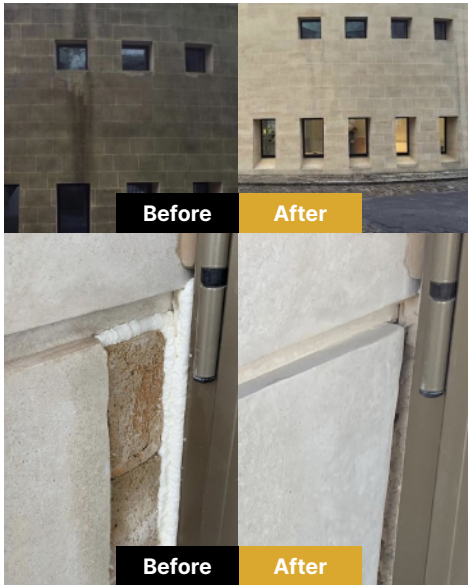
- Panelling
- Worktops
- Kitchen units
- Window frames
- Timber Floors
- Door Frames
- Desks
- Staircases
- Doors
- Furniture
- Corrosion
- Aging
- Scratches
- Scuffs
- Dents
- Chips
- Cracks
- Stains
- Worn
- Burns
- Discolouration
- Water damage



# STONE REPAIRS, CLEANING & POLISHING

**We offer external stone cleaning and restoration services ensuring building facades are restored back to their former glory.**

Our team also provide internal stone repair cleaning and machine polishing services on all types of stone.

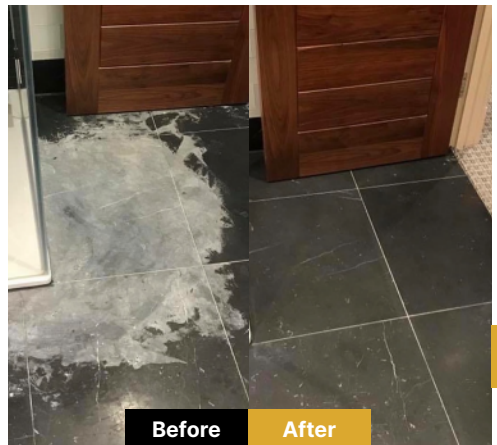


## External stone

- DOFF/ThermaTech cleaning
- Chemical cleaning
- Nebulous water cleaning systems
- Sand, joss and grit blasting
- Dry ice blasting
- Laser dirt removal
- Restoration
- Pinning and reinforcement
- Masonry repairs
- Repointing
- Brick repairs, replacement & tinting
- Graffiti
- Paint & coating stripping

## Internal stone

- Marble
- Granite
- Travertine
- Terracotta
- Corian
- Composite
- Sandstone
- Limestone
- Quartz
- Slate
- Damage repair
- Colouring
- Stain removal
- Cleaning
- Refinishing
- Machine polishing
- Sealing



# GLASS REPAIRS & POLISHING

**We offer the latest and most effective glass repair and polishing systems available. Our team have unrivalled expertise and value in addressing all types of damage that can be found on glass.**

Our glass service allows us to address virtually all glass applications, including:

- Curtain walling
- Structural glazing
- Façades
- Windows
- Doors
- Entrances
- Roof lights
- Balustrades
- Conservatories
- Frontages
- Stairwells
- Shower screens



All types of glass can be repaired, including:

- Double glazed
- Toughened
- Laminated
- Insulated
- Evacuated
- Cast
- Wired



The range of glass damage we can repair includes:

- Scratches
- Scuffs
- Defects
- Weld splatter
- Grinder splatter
- Chips
- Pollution stains
- Graffiti removal
- Vandalism





# FLOOR SANDING & REFINISHING

**We offer professional wood floor sanding & sealing using cutting edge dustless sanding machinery. Our experts offer a transformative solution to revitalise timber floors by restoring their natural beauty and enhancing durability.**

All our sanding operators have achieved excellence through very long experience and dedication in the floor sanding trade.

However, for their perfection in utilising all finishing products, they have also gone through NWFA training.



# OUR ACCREDITATIONS



Construction Line is the UK's largest and only government owned register of pre-qualified services. It streamlines procedures by supplying the construction industry and its clients with a single national pre-qualification scheme.

Safety Schemes in Procurement (SSIP) is the mutual recognition scheme for occupational health and safety standards. It operates as an umbrella organisation that encompasses assessment schemes with the common goal of reducing duplication and costs for both suppliers and buyers.



Icon is the professional membership body for the conservation profession. Icon's vision is to protect, preserve and promote our treasured cultural heritage through cultivating skilled conservation professionals, supporting meaningful collaboration across the cultural heritage sector, and delivering public benefit through engagement and advocacy.

City Surface Repairs site operatives all hold valid IPAF cards, our team have vast experience using MEWPS to access works at height.



All City Surface Repairs site operatives hold PASMA qualifications. This allows our team to safely erect access structures as and when necessary to undertake works at height.

All City Surface Repairs site operatives hold a Damage Repair And Resurfacing NVQ Level 2 or above. We carry out regular in house training ensuring our team are fully trained up to date.



All City Surface Repairs site operatives hold blue CSCS cards in line with their NVQ Level 2 Damage Repair And Resurfacing qualifications.

# OUR CLIENTS





CITY SURFACE  
REPAIRS

Restoration Services

Head office - 124 City Rd, London, EC1V 2NX  
Company Number: 13541974

📧 [info@citysurfacerepairs.com](mailto:info@citysurfacerepairs.com) ☎️ 07500617257

🌐 [www.citysurfacerepairs.com](http://www.citysurfacerepairs.com) ☎️ 07960072539

